

Narzynki

Screwing dies
Schneideisen



NARZYNKI
SCREWING DIES
SCHNEIDEISEN

Strona
Page
Seite

TABELA DOBORU NARZĘDZI / TOOLS SELECTION TABLE / WERKZEUGE SELEKTION TABELLE

111

STRONY KATALOGOWE / CATALOGUE PAGES / KATALOGSEITEN

112-128

| | | | | | | | |
|------------|----------------|-------------------|-----|---------|------|----|---------|
| M | DIN-EN 22 568 | HSS, LH HSS, HSSE | 800 | 800 SPN | INOX | Ms | 112 |
| | ~DIN-EN 22 568 | D-25, D-38 HSS | 800 | | | | 113 |
| | NHMg | HSS | 800 | | Ms | | 114 |
| MF | DIN-EN 22 568 | HSS, HSSE | 800 | 800 SPN | INOX | Ms | 115-117 |
| | ~DIN-EN 22 568 | D-25, D-38 HSS | 800 | | | | 118 |
| | NHMg | HSS | 800 | | Ms | | 119 |
| UNC | DIN-EN 22 568 | HSS | 800 | | | | 120 |
| UNF | DIN-EN 22 568 | HSS | 800 | | | | 121 |
| G | DIN-EN 24231 | HSS, LH HSS, HSSE | 800 | INOX | Ms | | 122 |
| | DIN-EN 22 568 | HSS | 800 | | Ms | | 123 |
| R | DIN-EN 24 230 | HSS | 800 | | | | 124 |
| BSW | DIN-EN 22 568 | HSS, LH HSS | 800 | | | | 125 |
| BSF | DIN-EN 22 568 | HSS | 800 | | | | 126 |
| NPT | ~DIN-EN 24 230 | HSS | 800 | | | | 127 |
| Pg | DIN-EN 22 568 | HSS | 800 | | | | 128 |

TABELA DOBORU / SELECTION TABLE / SELEKTION TABELLE

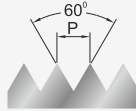
| DIN-EN 22 568, DIN-EN 24 231, DIN-EN 24 230 | | | | | | NHMg | | Norma Norm Norma |
|---|--|--|--|------------|--|---|-----------------------|------------------------|
| 112-113 | 112 | 112 | 112 | 114 | 114 | M | Strona / Page / Seite | |
| 115-118 | 115-117 | 115-118 | 115-118 | 119 | 119 | MF | | |
| 120 | | | | | | UNC | | |
| 121 | | | | | | UNF | | |
| 122 | | 122 | 122 | 123 | 123 | G | | |
| 124 | | | | | | R | | |
| 125 | | | | | | BSW | | |
| 126 | | | | | | BSF | | |
| 127 | | | | | | NPT | | |
| 128 | | | | | | Pg | | |
| 800 | 800 SPN | INOX | Ms | 800 | Ms | Nazwa Name Bezeichnung | | |
| | SPN - skośna powierzchnia natarcia SPN - spiral point SPN - Schälanschnitt | SPN - skośna powierzchnia natarcia SPN - spiral point SPN - Schälanschnitt | Docierane; specjalna geometria Lapped; special geometry Geläppt; besondere Geometrie | | Docierane; specjalna geometria Lapped; special geometry Geläppt; besondere Geometrie | Wykonanie Execution Ausführung | | |
| HSS | HSS | HSSE | HSS | HSS | HSS | Material Material Werkstoff | | |
| | | OX | | | | Rodzaj powłoki Coating Beschichtung | | |
| 1,75P | 1,75P | 2,25P | 1,25P | 1,75P | 1,25P | Nakrój Chamfer Anschnitt | | |
| E/O | E/O | E/O | E/O | E/O | E/O | Chłodziwo Coolant Kühlmittel | | |
| Vc [m/min] | | | | | | | | |
| | | | | | | | P | |
| 1-8 | 1-8 | 1-8 | | 1-8 | | 1.1 | | |
| 1-6 | 1-6 | 1-6 | | 1-6 | | 1.2 | | |
| 1-6 | 1-6 | 1-6 | | 1-6 | | 1.3 | | |
| 1-2 | 1-2 | 1-2 | | 1-2 | | 1.4 | | |
| | | | | | | | 1.5 | |
| | | | | | | | 1.6 | |
| | | | | | | | M | |
| | | | | | | | 2.1 | |
| | | | | | | | 2.2 | |
| | | | | | | | 2.3 | |
| | | | | | | | K | |
| | | | | | | | 3.1 | |
| | | | | | | | 3.2 | |
| | | | | | | | 3.3 | |
| | | | | | | | N | |
| | | | | | | | 4.1 | |
| 5-10 | 5-18 5-10 | 5-18 5-15 | | 5-10 | | 4.2 | | |
| | | | | | | | 4.3 | |
| | | | | | | | 4.4 | |
| | | | | | | | 4.5 | |
| | | | | | | | 4.6 | |
| 1-5 | | | | 1-5 | | 4.7 | | |
| 1-5 | | | | 1-5 | | 4.8 | | |
| 1-5 | | | | 1-5 | | 4.9 | | |
| | | | | | | | 4.10 | |
| | | | | | | | 4.11 | |
| 1-5 | | 1-5 | | 1-5 | | 4.12 | | |
| | | | | | | | 4.13 | |
| | | | | | | | S | |
| | | | | | | | 5.1 | |
| | | | | | | | 5.2 | |
| | | | | | | | 5.3 | |
| | | | | | | | 5.4 | |
| | | | | | | | H | |
| | | | | | | | 6.1 | |
| | | | | | | | 6.2 | |
| | | | | | | | 6.3 | |
| | | | | | | | 6.4 | |

Grupa materiałowa / Material group / Werkstoffgruppe

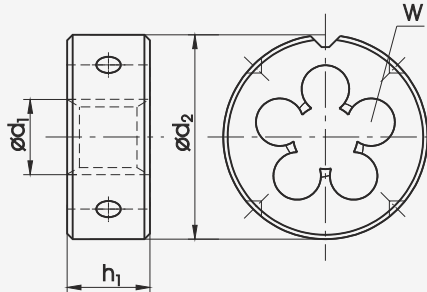
Gwint metryczny zwykły ISO DIN-13

ISO Metric coarse thread DIN-13

Metrisches ISO-Regelgewinde DIN-13




HSS HSSE


DIN-EN 22 568


LH

| Nazwa / Name / Bezeichnung | 800 | 800 | 800 SPN | INOX | Ms |
|--|-------|-------|---------|-------|-------|
| Materiał obrabiany / Material / Werkstoff | | | | | |
| Rodzaj materiału / Quality of material / Qualität | HSS | HSS | HSS | HSSE | HSS |
| Wykonanie / Execution / Ausführung | | LH | | | |
| Nakrój / Chamfer / Anschnitt | 1,75P | 1,75P | 1,75P | 2,25P | 1,25P |
| Tolerancja / Tolerance / Toleranz | 6g | 6g | 6g | 6g | 6g |

| M | P | $\varnothing d_2 \times h_1$ | W |  | INDEX | N1-121001 | N1-111001 | N1-141001 | N2-188001 | N1-164001 |
|-------|------|------------------------------|---|---|-------|-----------|-----------|-----------|-----------|-----------|
| M 1 | 0,25 | 16 x 5 | 3 | 0,96 | 0010 | ● | | | | |
| M 1,1 | 0,25 | 16 x 5 | 3 | 1,05 | 0011 | ● | | | | |
| M 1,2 | 0,25 | 16 x 5 | 3 | 1,15 | 0012 | ● | | | | |
| M 1,4 | 0,3 | 16 x 5 | 3 | 1,35 | 0014 | ● | | | | |
| M 1,6 | 0,35 | 16 x 5 | 3 | 1,55 | 0016 | ● | | | | |
| M 1,8 | 0,35 | 16 x 5 | 3 | 1,75 | 0018 | ● | | | | |
| M 2 | 0,4 | 16 x 5 | 3 | 1,95 | 0020 | ● | | | | |
| M 2,2 | 0,45 | 16 x 5 | 3 | 2,15 | 0022 | ● | | | | |
| M 2,5 | 0,45 | 16 x 5 | 3 | 2,42 | 0025 | ● | | | | |
| M 3 | 0,5 | 20 x 5 | 3 | 2,92 | 0030 | ● | ● | ● | ● | ● |
| M 3,5 | 0,6 | 20 x 5 | 3 | 3,41 | 0035 | ● | ○ | ● | ○ | ○ |
| M 4 | 0,7 | 20 x 5 | 3 | 3,90 | 0040 | ● | ● | ● | ● | ● |
| M 4,5 | 0,75 | 20 x 7 | 3 | 4,40 | 0045 | ● | ○ | ● | ○ | ○ |
| M 5 | 0,8 | 20 x 7 | 3 | 4,90 | 0050 | ● | ● | ● | ● | ● |
| M 6 | 1 | 20 x 7 | 4 | 5,88 | 0060 | ● | ● | ● | ● | ● |
| M 7 | 1 | 25 x 9 | 4 | 6,88 | 0070 | ● | ○ | ● | ○ | ○ |
| M 8 | 1,25 | 25 x 9 | 4 | 7,86 | 0080 | ● | ● | ● | ● | ● |
| M 9 | 1,25 | 25 x 9 | 4 | 8,86 | 0090 | ● | ○ | ● | ○ | ○ |
| M 10 | 1,5 | 30 x 11 | 4 | 9,85 | 0100 | ● | ● | ● | ● | ● |
| M 11 | 1,5 | 30 x 11 | 4 | 10,85 | 0110 | ● | ○ | ● | ○ | ○ |
| M 12 | 1,75 | 38 x 14 | 4 | 11,83 | 0120 | ● | ● | ● | ● | ○ |
| M 14 | 2 | 38 x 14 | 4 | 13,82 | 0140 | ● | ● | ● | ● | ○ |
| M 16 | 2 | 45 x 18 | 5 | 15,82 | 0160 | ● | ● | ● | ● | ○ |
| M 18 | 2,5 | 45 x 18 | 5 | 17,79 | 0180 | ● | ● | ● | ● | ○ |
| M 20 | 2,5 | 45 x 18 | 5 | 19,79 | 0200 | ● | ● | ● | ● | ○ |
| M 22 | 2,5 | 55 x 22 | 5 | 21,79 | 0220 | ● | ● | ● | ● | ○ |
| M 24 | 3 | 55 x 22 | 5 | 23,76 | 0240 | ● | ● | ● | ● | ○ |
| M 27 | 3 | 65 x 25 | 5 | 26,76 | 0270 | ● | ● | ● | ● | ○ |
| M 30 | 3,5 | 65 x 25 | 6 | 29,73 | 0300 | ● | ● | ● | ● | ○ |
| M 33 | 3,5 | 65 x 25 | 6 | 32,73 | 0330 | ● | ● | ● | ○ | ○ |
| M 36 | 4 | 65 x 25 | 7 | 35,70 | 0360 | ● | ● | ● | ○ | ○ |
| M 39 | 4 | 75 x 30 | 7 | 38,70 | 0390 | ● | ○ | ○ | ○ | ○ |
| M 42 | 4,5 | 75 x 30 | 7 | 41,68 | 0420 | ● | ○ | ○ | ○ | ○ |
| M 45 | 4,5 | 90 x 36 | 7 | 44,68 | 0450 | ● | ○ | ○ | ○ | ○ |
| M 48 | 5 | 90 x 36 | 7 | 47,66 | 0480 | ● | ○ | ○ | ○ | ○ |
| M 52 | 5 | 90 x 36 | 8 | 51,66 | 0520 | ● | ○ | ○ | ○ | ○ |
| M 56 | 5,5 | 105 x 36 | 6 | 55,65 | 0560 | ○ | ○ | ○ | ○ | ○ |
| M 60 | 5,5 | 105 x 36 | 8 | 59,65 | 0600 | ○ | ○ | ○ | ○ | ○ |
| M 64 | 6 | 120 x 36 | 7 | 63,62 | 0640 | ○ | ○ | ○ | ○ | ○ |
| M 68 | 6 | 120 x 36 | 8 | 67,62 | 0680 | ○ | ○ | ○ | ○ | ○ |

Przykład zamawiania / Example of order / Beispiel einer Bestellung:

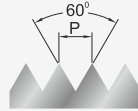
 N1-121001-0030
 DIN-EN 22 568 M3 6g HSS 800

● Dostępne z magazynu / On stock / Ab Lager

○ Na zapytanie / On request / Auf Anfrage

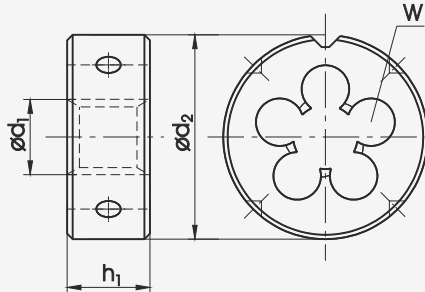
Gwint metryczny zwykły ISO DIN-13

ISO Metric coarse thread DIN-13
 Metrisches ISO-Regelgewinde DIN-13



~DIN-EN 22 568

HSS



| Nazwa / Name / Bezeichnung | | | | | | 800 | 800 | | | |
|--|------|------------------------------|---|-------|-------|-----------|-----------|--|--|--|
| Materiał obrabiany / Material / Werkstoff | | | | | | | | | | |
| Rodzaj materiału / Quality of material / Qualität | | | | | | HSS | HSS | | | |
| Wykonanie / Execution / Ausführung | | | | | | D25 | D38 | | | |
| Nakrój / Chamfer / Anschnitt | | | | | | 1,75P | 1,75P | | | |
| Tolerancja / Tolerance / Toleranz | | | | | | 6g | 6g | | | |
| M $\varnothing d_1$ | P | $\varnothing d_2 \times h_1$ | W | | INDEX | N1-121251 | N1-121381 | | | |
| M 3 | 0,5 | 25 x 9 | 3 | 2,92 | 0030 | ● | | | | |
| M 4 | 0,7 | 25 x 9 | 3 | 3,90 | 0040 | ● | | | | |
| M 5 | 0,8 | 25 x 9 | 3 | 4,90 | 0050 | ● | | | | |
| M 6 | 1 | 25 x 9 | 3 | 5,88 | 0060 | ● | | | | |
| M 7* | 1 | 25 x 9 | 4 | 6,88 | 0070* | | | | | |
| M 8* | 1,25 | 25 x 9 | 4 | 7,86 | 0080* | | | | | |
| M 10 | 1,5 | 25 x 9 | 5 | 9,85 | 0100 | ● | | | | |
| M 12 | 1,75 | 25 x 9 | 6 | 11,83 | 0120 | ● | | | | |
| M 16 | 2 | 38 x 14 | 6 | 15,82 | 0160 | | ● | | | |
| M 20 | 2,5 | 38 x 14 | 6 | 19,79 | 0200 | | ● | | | |

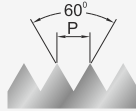
*** Gabaryty standardowe dostępne pod indeksem N1-121001**
 * standard overall dimensions available with catalogue number N1-121001
 * Standardabmessungen sind unter dem Index N1-121001 erhältlich

Oprawki do narzynek na stronie 214
 Die stocks at 214 page
 Schneisenhalter auf der Seite 214

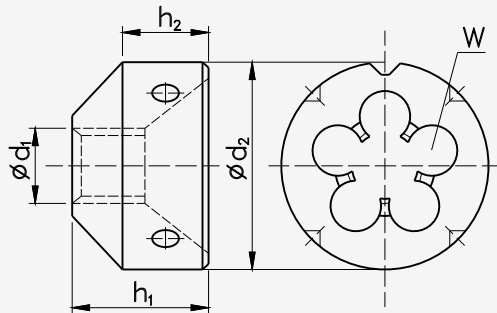
Gwint metryczny zwykły ISO DIN-13

ISO Metric coarse thread DIN-13

Metrisches ISO-Regelgewinde DIN-13



HSS


NHMg


Nazwa / Name / Bezeichnung

800

Ms

Materiał obrabiany / Material / Werkstoff

Rodzaj materiału / Quality of material / Qualität

HSS

HSS

Wykonanie / Execution / Ausführung

Nakrój / Chamfer / Anschnitt

1,75P

1,25P

Tolerancja / Tolerance / Toleranz

6g

6g

| M Ød ₁ | P | Ød ₂ | h ₁ | h ₂ | W | | INDEX | K1-821001 | K1-864001 |
|----------------------|------|-----------------|----------------|----------------|---|-------|-------|-----------|-----------|
| M 3 | 0,5 | 20 | 12 | 7 | 3 | 2,92 | 0030 | o | o |
| M 4 | 0,7 | 20 | 12 | 7 | 3 | 3,90 | 0040 | o | o |
| M 5 | 0,8 | 20 | 12 | 7 | 3 | 4,90 | 0050 | o | o |
| M 6 | 1 | 20 | 12 | 7 | 4 | 5,88 | 0060 | ● | o |
| M 8 | 1,25 | 25 | 15 | 9 | 4 | 7,86 | 0080 | ● | o |
| M 10 | 1,5 | 25 | 15 | 9 | 5 | 9,85 | 0100 | ● | o |
| M 12 | 1,75 | 30 | 18 | 11 | 5 | 11,83 | 0120 | ● | o |
| M 14 | 2 | 30 | 18 | 11 | 5 | 13,82 | 0140 | o | o |
| M 16 | 2 | 38 | 22 | 14 | 6 | 15,82 | 0160 | o | o |
| M 18 | 2,5 | 38 | 22 | 14 | 6 | 17,79 | 0180 | o | o |
| M 20 | 2,5 | 45 | 28 | 18 | 7 | 19,79 | 0200 | o | o |
| M 22 | 2,5 | 45 | 28 | 18 | 6 | 21,79 | 0220 | o | o |
| M 24 | 3 | 45 | 28 | 18 | 8 | 23,76 | 0240 | o | o |

Przykład zamawiania / Example of order / Beispiel einer Bestellung:

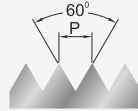
 K1-821001-0030
 NHMg M3 6g HSS 800

● Dostępne z magazynu / On stock / Ab Lager

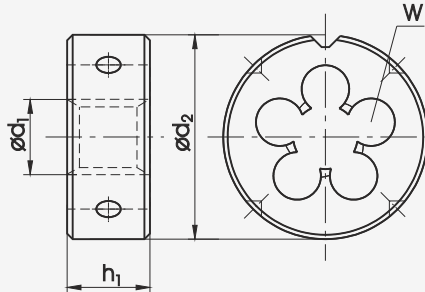
○ Na zapytanie / On request / Auf Anfrage

Gwint metryczny drobnozwojny ISO DIN-13

ISO Metric fine thread DIN-13
Metrisches ISO-Feingewinde DIN-13



HSS HSSE



DIN-EN 22 568



| | | | | | |
|--|-------|-------|---------|-------|-------|
| Nazwa / Name / Bezeichnung | 800 | 800 | 800 SPN | INOX | Ms |
| Materiał obrabiany / Material / Werkstoff | | | | | |
| Rodzaj materiału / Quality of material / Qualität | HSS | HSS | HSS | HSSE | HSS |
| Wykonanie / Execution / Ausführung | | LH | | | |
| Nakrój / Chamfer / Anschnitt | 1,75P | 1,75P | 1,75P | 2,25P | 1,25P |
| Tolerancja / Tolerance / Toleranz | 6g | 6g | 6g | 6g | 6g |

3

| MF | P | $\varnothing d_2 \times h_1$ | W | | INDEX | N1-121001 | N1-111001 | N1-141001 | N2-188001 | N1-164001 |
|--------------|------|------------------------------|---|-------|-------|-----------|-----------|-----------|-----------|-----------|
| M 3,5 x 0,5 | 0,5 | 20 x 5 | 3 | 3,43 | 0037 | o | o | o | o | o |
| M 4 x 0,5 | 0,5 | 20 x 5 | 4 | 3,92 | 0041 | ● | o | o | o | o |
| M 4,5 x 0,5 | 0,5 | 20 x 5 | 4 | 4,43 | 0046 | o | o | o | o | o |
| M 5 x 0,5 | 0,5 | 20 x 5 | 4 | 4,92 | 0051 | ● | o | o | o | o |
| M 5 x 0,75 | 0,75 | 20 x 5 | 4 | 4,91 | 0052 | o | o | o | o | o |
| M 5,5 x 0,5 | 0,5 | 20 x 5 | 4 | 5,43 | 0056 | o | o | o | o | o |
| M 5,5 x 0,75 | 0,75 | 20 x 7 | 4 | 5,42 | 0057 | o | o | o | o | o |
| M 6 x 0,5 | 0,5 | 20 x 7 | 4 | 5,92 | 0061 | ● | o | o | o | o |
| M 6 x 0,75 | 0,75 | 20 x 7 | 4 | 5,90 | 0062 | ● | o | ● | o | o |
| M 7 x 0,75 | 0,75 | 25 x 9 | 4 | 6,90 | 0072 | ● | o | ● | o | o |
| M 8 x 0,5 | 0,5 | 25 x 9 | 4 | 7,92 | 0081 | ● | o | o | o | o |
| M 8 x 0,75 | 0,75 | 25 x 9 | 4 | 7,90 | 0082 | ● | ● | ● | o | ● |
| M 8 x 1 | 1 | 25 x 9 | 4 | 7,88 | 0083 | ● | ● | ● | o | ● |
| M 9 x 0,75 | 0,75 | 25 x 9 | 4 | 8,90 | 0092 | ● | o | o | o | o |
| M 9 x 1 | 1 | 25 x 9 | 4 | 8,88 | 0093 | ● | o | o | o | o |
| M 10 x 0,75 | 0,75 | 30 x 11 | 4 | 9,90 | 0102 | ● | o | ● | o | o |
| M 10 x 1 | 1 | 30 x 11 | 5 | 9,88 | 0103 | ● | ● | ● | ● | ● |
| M 10 x 1,25 | 1,25 | 30 x 11 | 4 | 9,86 | 0104 | ● | o | ● | ● | o |
| M 11 x 0,75 | 0,75 | 30 x 11 | 5 | 10,91 | 0112 | ● | o | o | o | o |
| M 11 x 1 | 1 | 30 x 11 | 4 | 10,88 | 0113 | ● | o | ● | o | o |
| M 12 x 1 | 1 | 38 x 10 | 5 | 11,88 | 0123 | ● | ● | ● | o | o |
| M 12 x 1,25 | 1,25 | 38 x 10 | 4 | 11,86 | 0124 | ● | ● | ● | ● | o |
| M 12 x 1,5 | 1,5 | 38 x 10 | 4 | 11,85 | 0125 | ● | ● | ● | ● | ● |
| M 14 x 1 | 1 | 38 x 10 | 5 | 13,88 | 0143 | ● | ● | o | o | o |
| M 14 x 1,5 | 1,5 | 38 x 10 | 5 | 13,85 | 0145 | ● | ● | ● | ● | ● |
| M 15 x 1 | 1 | 38 x 10 | 5 | 14,88 | 0153 | ● | o | o | o | o |
| M 15 x 1,5 | 1,5 | 38 x 10 | 5 | 14,85 | 0155 | ● | o | o | o | o |
| M 16 x 1 | 1 | 45 x 14 | 5 | 15,88 | 0163 | ● | ● | o | o | o |
| M 16 x 1,5 | 1,5 | 45 x 14 | 5 | 15,85 | 0165 | ● | ● | ● | ● | ● |
| M 17 x 1 | 1 | 45 x 14 | 5 | 16,88 | 0173 | ● | o | o | o | o |
| M 17 x 1,5 | 1,5 | 45 x 14 | 5 | 16,85 | 0175 | ● | o | o | o | o |
| M 18 x 1 | 1 | 45 x 14 | 5 | 17,88 | 0183 | ● | ● | o | o | o |
| M 18 x 1,5 | 1,5 | 45 x 14 | 5 | 17,85 | 0185 | ● | ● | ● | ● | ● |
| M 18 x 2 | 2 | 45 x 14 | 5 | 17,82 | 0186 | ● | ● | o | o | o |
| M 20 x 1 | 1 | 45 x 14 | 6 | 19,80 | 0203 | ● | ● | o | o | o |
| M 20 x 1,5 | 1,5 | 45 x 14 | 6 | 19,85 | 0205 | ● | ● | ● | ● | ● |
| M 20 x 2 | 2 | 45 x 14 | 6 | 19,82 | 0206 | ● | ● | o | o | o |
| M 22 x 1 | 1 | 55 x 16 | 6 | 21,88 | 0223 | ● | ● | o | o | o |
| M 22 x 1,5 | 1,5 | 55 x 16 | 6 | 21,85 | 0225 | ● | ● | ● | ● | ● |
| M 22 x 2 | 2 | 55 x 16 | 6 | 21,82 | 0226 | ● | ● | o | o | o |
| M 24 x 1 | 1 | 55 x 16 | 6 | 21,88 | 0243 | ● | ● | o | o | o |
| M 24 x 1,5 | 1,5 | 55 x 16 | 6 | 23,85 | 0245 | ● | ● | ● | ● | ● |

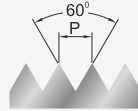
Przykład zamawiania / Example of order / Beispiel einer Bestellung:
N1-121001-0103
DIN-EN 22 568 M10x1 6g HSS 800

● Dostępne z magazynu / On stock / Ab Lager
○ Na zapytanie / On request / Auf Anfrage

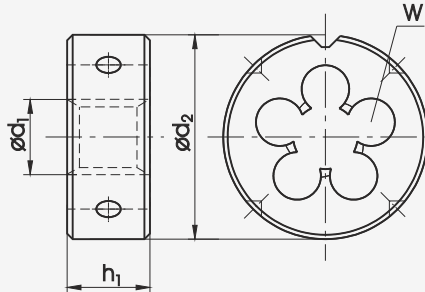
Gwint metryczny drobnozwojny ISO DIN-13

ISO Metric fine thread DIN-13

Metrisches ISO-Feingewinde DIN-13



HSS HSSE



DIN-EN 22 568



Nazwa / Name / Bezeichnung

Materiał obrabiany / Material / Werkstoff

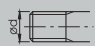
Rodzaj materiału / Quality of material / Qualität

Wykonanie / Execution / Ausführung

Nakrój / Chamfer / Anschnitt

Tolerancja / Tolerance / Toleranz

| 800 | 800 | 800 SPN | INOX | Ms |
|-------|-------|---------|-------|-------|
| HSS | HSS | HSS | HSSE | HSS |
| | LH | | | |
| 1,75P | 1,75P | 1,75P | 2,25P | 1,25P |
| 6g | 6g | 6g | 6g | 6g |

| MF $\varnothing d_1$ | P | $\varnothing d_2 \times h_1$ | W |  | INDEX | N1-121001 | N1-111001 | N1-141001 | N2-188001 | N1-164001 |
|-------------------------|-----|------------------------------|---|---|-------|-----------|-----------|-----------|-----------|-----------|
| M 24 x 2 | 2 | 55 x 16 | 6 | 23,82 | 0246 | ● | ● | ○ | ○ | ○ |
| M 25 x 1 | 1 | 55 x 16 | 6 | 24,88 | 0253 | ● | ○ | ○ | ○ | ○ |
| M 25 x 1,5 | 1,5 | 55 x 16 | 6 | 24,85 | 0255 | ● | ○ | ○ | ○ | ○ |
| M 25 x 2 | 2 | 55 x 16 | 6 | 24,82 | 0256 | ● | ○ | ○ | ○ | ○ |
| M 26 x 1,5 | 1,5 | 55 x 16 | 6 | 25,85 | 0265 | ● | ○ | ○ | ○ | ○ |
| M 27 x 1 | 1 | 65 x 18 | 6 | 26,88 | 0273 | ● | ○ | ○ | ○ | ○ |
| M 27 x 1,5 | 1,5 | 65 x 18 | 6 | 26,85 | 0275 | ● | ○ | ○ | ○ | ○ |
| M 27 x 2 | 2 | 65 x 18 | 6 | 26,82 | 0276 | ● | ○ | ○ | ○ | ○ |
| M 28 x 1 | 1 | 65 x 18 | 6 | 27,88 | 0283 | ● | ○ | ○ | ○ | ○ |
| M 28 x 1,5 | 1,5 | 65 x 18 | 6 | 27,85 | 0285 | ● | ○ | ○ | ○ | ○ |
| M 28 x 2 | 2 | 65 x 18 | 6 | 27,82 | 0286 | ● | ○ | ○ | ○ | ○ |
| M 30 x 1 | 1 | 65 x 18 | 6 | 29,88 | 0303 | ● | ○ | ○ | ○ | ○ |
| M 30 x 1,5 | 1,5 | 65 x 18 | 6 | 29,85 | 0305 | ● | ○ | ○ | ○ | ○ |
| M 30 x 2 | 2 | 65 x 18 | 6 | 29,82 | 0306 | ● | ○ | ○ | ○ | ○ |
| M 30 x 3 | 3 | 65 x 18 | 6 | 29,76 | 0307 | ● | ○ | ○ | ○ | ○ |
| M 32 x 1,5 | 1,5 | 65 x 18 | 7 | 31,85 | 0325 | ● | ○ | ○ | ○ | ○ |
| M 32 x 2 | 2 | 65 x 18 | 7 | 31,82 | 0326 | ● | ○ | ○ | ○ | ○ |
| M 33 x 1,5 | 1,5 | 65 x 18 | 7 | 32,85 | 0335 | ● | ○ | ○ | ○ | ○ |
| M 33 x 2 | 2 | 65 x 18 | 7 | 32,82 | 0336 | ● | ○ | ○ | ○ | ○ |
| M 33 x 3 | 3 | 65 x 18 | 7 | 32,76 | 0337 | ● | ○ | ○ | ○ | ○ |
| M 35 x 1,5 | 1,5 | 65 x 18 | 7 | 34,85 | 0355 | ● | ○ | ○ | ○ | ○ |
| M 36 x 1,5 | 1,5 | 65 x 18 | 7 | 35,85 | 0365 | ● | ○ | ○ | ○ | ○ |
| M 36 x 2 | 2 | 65 x 18 | 7 | 35,82 | 0366 | ● | ○ | ○ | ○ | ○ |
| M 36 x 3 | 3 | 65 x 25 | 7 | 35,76 | 0367 | ● | ○ | ○ | ○ | ○ |
| M 38 x 1,5 | 1,5 | 75 x 20 | 7 | 37,85 | 0385 | ● | ○ | ○ | ○ | ○ |
| M 39 x 1,5 | 1,5 | 75 x 20 | 7 | 38,85 | 0395 | ● | ○ | ○ | ○ | ○ |
| M 39 x 2 | 2 | 75 x 20 | 7 | 38,82 | 0396 | ● | ○ | ○ | ○ | ○ |
| M 39 x 3 | 3 | 75 x 30 | 7 | 38,76 | 0397 | ● | ○ | ○ | ○ | ○ |
| M 40 x 1,5 | 1,5 | 75 x 20 | 7 | 39,85 | 0405 | ● | ○ | ○ | ○ | ○ |
| M 40 x 2 | 2 | 75 x 20 | 7 | 39,82 | 0406 | ● | ○ | ○ | ○ | ○ |
| M 40 x 3 | 3 | 75 x 30 | 7 | 39,76 | 0407 | ● | ○ | ○ | ○ | ○ |
| M 42 x 1,5 | 1,5 | 75 x 20 | 8 | 41,85 | 0425 | ● | ○ | ○ | ○ | ○ |
| M 42 x 2 | 2 | 75 x 20 | 8 | 41,82 | 0426 | ● | ○ | ○ | ○ | ○ |
| M 42 x 3 | 3 | 75 x 30 | 7 | 41,76 | 0427 | ● | ○ | ○ | ○ | ○ |
| M 45 x 1,5 | 1,5 | 90 x 22 | 7 | 44,85 | 0455 | ● | ○ | ○ | ○ | ○ |
| M 45 x 2 | 2 | 90 x 22 | 7 | 44,82 | 0456 | ● | ○ | ○ | ○ | ○ |
| M 45 x 3 | 3 | 90 x 36 | 7 | 44,76 | 0457 | ● | ○ | ○ | ○ | ○ |
| M 48 x 1,5 | 1,5 | 90 x 22 | 7 | 47,85 | 0485 | ● | ○ | ○ | ○ | ○ |
| M 48 x 2 | 2 | 90 x 22 | 7 | 47,82 | 0486 | ● | ○ | ○ | ○ | ○ |
| M 48 x 3 | 3 | 90 x 36 | 7 | 47,76 | 0487 | ● | ○ | ○ | ○ | ○ |
| M 48 x 4 | 4 | 90 x 36 | 7 | 47,73 | 0488 | ● | ○ | ○ | ○ | ○ |
| M 50 x 1,5 | 1,5 | 90 x 22 | 8 | 49,85 | 0505 | ● | ○ | ○ | ○ | ○ |

Przykład zamawiania / Example of order / Beispiel einer Bestellung:

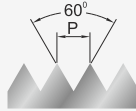
N1-121001-0306
DIN-EN 22 568 M30x2 6g HSS 800

● Dostępne z magazynu / On stock / Ab Lager

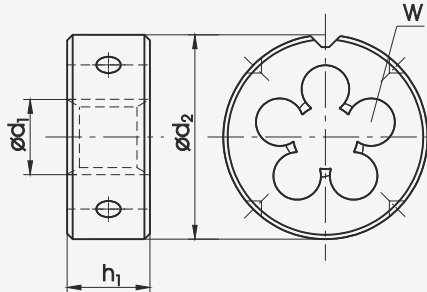
○ Na zapytanie / On request / Auf Anfrage

Gwint metryczny drobnozwojny ISO DIN-13

ISO Metric fine thread DIN-13
Metrisches ISO-Feingewinde DIN-13



HSS HSSE



DIN-EN 22 568

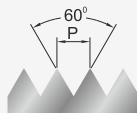


| Nazwa / Name / Bezeichnung | 800 | 800 | 800 SPN | INOX | Ms | | | | | |
|--|-------|-----------------------|---------|-------|-------|-----------|-----------|-----------|-----------|-----------|
| Materiał obrabiany / Material / Werkstoff | | | | | | | | | | |
| Rodzaj materiału / Quality of material / Qualität | HSS | HSS | HSS | HSSE | HSS | | | | | |
| Wykonanie / Execution / Ausführung | | LH | | | | | | | | |
| Nakrój / Chamfer / Anschnitt | 1,75P | 1,75P | 1,75P | 2,25P | 1,25P | | | | | |
| Tolerancja / Tolerance / Toleranz | 6g | 6g | 6g | 6g | 6g | | | | | |
| MF ϕd_1 | P | $\phi d_2 \times h_1$ | W | | INDEX | N1-121001 | N1-111001 | N1-141001 | N2-188001 | N1-164001 |
| M 50 x 2 | 2 | 90 x 22 | 8 | 49,82 | 0506 | ● | ○ | ○ | ○ | ○ |
| M 50 x 3 | 3 | 90 x 36 | 8 | 49,76 | 0507 | ● | ○ | ○ | ○ | ○ |
| M 52 x 1,5 | 1,5 | 90 x 36 | 8 | 51,85 | 0525 | ● | ○ | ○ | ○ | ○ |
| M 52 x 2 | 2 | 90 x 22 | 8 | 51,82 | 0526 | ● | ○ | ○ | ○ | ○ |
| M 52 x 3 | 3 | 90 x 36 | 8 | 51,76 | 0527 | ● | ○ | ○ | ○ | ○ |
| M 52 x 4 | 4 | 90 x 36 | 8 | 51,73 | 0528 | ● | ○ | ○ | ○ | ○ |
| M 55 x 1,5 | 1,5 | 105 x 22 | 8 | 54,85 | 0555 | ○ | ○ | ○ | ○ | ○ |
| M 55 x 2 | 2 | 105 x 22 | 7 | 54,82 | 0556 | ○ | ○ | ○ | ○ | ○ |
| M 55 x 3 | 3 | 105 x 36 | 7 | 54,76 | 0557 | ○ | ○ | ○ | ○ | ○ |
| M 55 x 4 | 4 | 105 x 36 | 7 | 54,73 | 0558 | ○ | ○ | ○ | ○ | ○ |
| M 56 x 1,5 | 1,5 | 105 x 22 | 8 | 55,85 | 0565 | ○ | ○ | ○ | ○ | ○ |
| M 56 x 2 | 2 | 105 x 22 | 8 | 55,82 | 0566 | ○ | ○ | ○ | ○ | ○ |
| M 56 x 3 | 3 | 105 x 36 | 8 | 55,76 | 0567 | ○ | ○ | ○ | ○ | ○ |
| M 56 x 4 | 4 | 105 x 36 | 7 | 55,73 | 0568 | ○ | ○ | ○ | ○ | ○ |

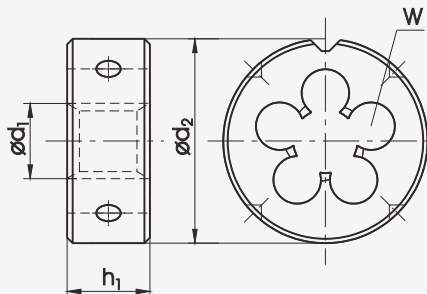
Gwint metryczny drobnozwojny ISO DIN-13

ISO Metric fine thread DIN-13

Metrisches ISO-Feingewinde DIN-13



HSS



~DIN-EN 22 568



Nazwa / Name / Bezeichnung

800

800

Materiał obrabiany / Material / Werkstoff

Rodzaj materiału / Quality of material / Qualität

HSS

HSS

Wykonanie / Execution / Ausführung

D25

D38

Nakrój / Chamfer / Anschnitt

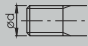
1,75P

1,75P

Tolerancja / Tolerance / Toleranz

6g

6g

| MF $\varnothing d_1$ | P | $\varnothing d_2 \times h_1$ | W |  | INDEX | N1-121251 | N1-121381 |
|-------------------------|------|------------------------------|---|---|-------|-----------|-----------|
| M 8 x 1* | 1 | 25 x 9 | 4 | 7,88 | 0083* | | |
| M 10 x 1 | 1 | 25 x 9 | 5 | 9,88 | 0103 | ● | |
| M 10 x 1,25 | 1,25 | 25 x 9 | 5 | 9,86 | 0104 | ● | |
| M 12 x 1,25 | 1,25 | 25 x 9 | 6 | 11,86 | 0124 | ● | |
| M 12 x 1,5 | 1,5 | 25 x 9 | 6 | 11,85 | 0125 | ● | |
| M 16 x 1,5 | 1,5 | 38 x 14 | 6 | 15,85 | 0165 | | ● |
| M 18 x 1,5 | 1,5 | 38 x 14 | 6 | 17,85 | 0185 | | ● |

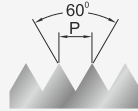
* Gabaryty standardowe dostępne pod indeksem N1-121001

* standard overall dimensions available with catalogue number N1-121001

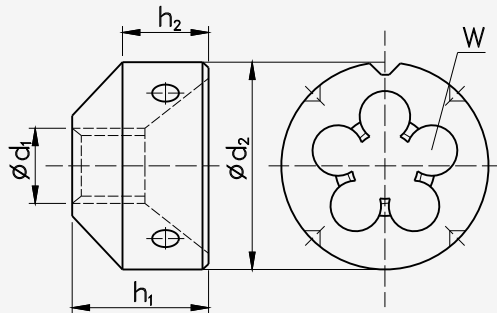
* Standardabmessungen sind unter dem Index N1-121001 erhältlich

Gwint metryczny drobnozwojny ISO DIN-13

ISO Metric fine thread DIN-13
Metrisches ISO-Feingewinde DIN-13



HSS



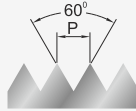
NHMg



| Nazwa / Name / Bezeichnung | | | | | | | | 800 | Ms | | | |
|--|-----|------------|-------|-------|---|-------|-------|-----------|-----------|--|--|--|
| Materiał obrabiany / Material / Werkstoff | | | | | | | | | | | | |
| Rodzaj materiału / Quality of material / Qualität | | | | | | | | HSS | HSS | | | |
| Wykonanie / Execution / Ausführung | | | | | | | | | | | | |
| Nakrój / Chamfer / Anschnitt | | | | | | | | 1,75P | 1,25P | | | |
| Tolerancja / Tolerance / Toleranz | | | | | | | | 6g | 6g | | | |
| MF ϕd_1 | P | ϕd_2 | h_1 | h_2 | W | | INDEX | K1-821001 | K1-864001 | | | |
| M 8 x 1 | 1 | 25 | 15 | 9 | 4 | 7,88 | 0083 | o | o | | | |
| M 10 x 1 | 1 | 25 | 15 | 9 | 5 | 9,88 | 0103 | o | o | | | |
| M 12 x 1 | 1 | 30 | 18 | 11 | 6 | 11,88 | 0123 | o | o | | | |
| M 14 x 1 | 1 | 30 | 18 | 11 | 6 | 13,88 | 0143 | o | o | | | |
| M 14 x 1,5 | 1,5 | 30 | 18 | 11 | 6 | 13,85 | 0145 | o | o | | | |
| M 16 x 1,5 | 1,5 | 38 | 22 | 14 | 6 | 15,85 | 0165 | o | o | | | |
| M 18 x 1,5 | 1,5 | 38 | 22 | 14 | 6 | 17,85 | 0185 | o | o | | | |
| M 20 x 1,5 | 1,5 | 38 | 22 | 14 | 7 | 19,85 | 0205 | o | o | | | |
| M 22 x 1,5 | 1,5 | 45 | 28 | 18 | 6 | 21,85 | 0225 | o | o | | | |
| M 24 x 1,5 | 1,5 | 45 | 28 | 18 | 8 | 23,85 | 0245 | o | o | | | |

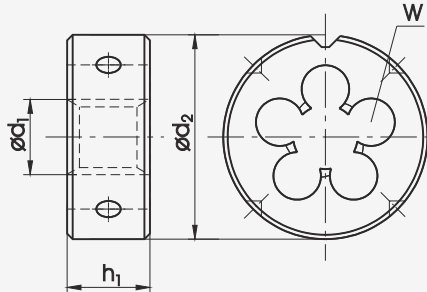
Gwint amerykański zunifikowany UNC, ANSI B-1.1

American unified coarse thread UNC, ANSI B-1.1
Amerikanisches Unified - Grobgewinde UNC, ANSI B-1.1



DIN-EN 22 568

HSS



Nazwa / Name / Bezeichnung

800 800

Materiał obrabiany / Material / Werkstoff

Rodzaj materiału / Quality of material / Qualität

HSS HSS

Wykonanie / Execution / Ausführung

LH

Nakrój / Chamfer / Anschnitt

1,75P 1,75P

Tolerancja / Tolerance / Toleranz

2A 2A

| UNC | $\varnothing d_1$ | 1"/P | P | $\varnothing d_2 \times h_1$ | W | $\varnothing d_1$ | INDEX | N1-121001 | N1-111001 |
|------------|-------------------|-------|-------|------------------------------|---|-------------------|-------|-----------|-----------|
| No 5 - 40 | 3,175 | 40 | 0,635 | 20 x 5 | 3 | 3,09 | 4105 | ● | ○ |
| No 6 - 32 | 3,505 | 32 | 0,794 | 20 x 5 | 3 | 3,41 | 4106 | ● | ○ |
| No 8 - 32 | 4,166 | 32 | 0,794 | 20 x 7 | 3 | 4,07 | 4108 | ● | ○ |
| No 10 - 24 | 4,826 | 24 | 1,058 | 20 x 7 | 3 | 4,71 | 4110 | ● | ○ |
| No 12 - 24 | 5,486 | 24 | 1,058 | 20 x 7 | 4 | 5,37 | 4112 | ● | ○ |
| 1/4 - 20 | 6,350 | 20 | 1,270 | 20 x 7 | 4 | 6,22 | 4127 | ● | ○ |
| 5/16 - 18 | 7,938 | 18 | 1,411 | 25 x 9 | 4 | 7,80 | 4128 | ● | ○ |
| 3/8 - 16 | 9,525 | 16 | 1,588 | 30 x 11 | 4 | 9,37 | 4129 | ● | ○ |
| 7/16 - 14 | 11,112 | 14 | 1,814 | 30 x 11 | 4 | 10,95 | 4130 | ● | ○ |
| 1/2 - 13 | 12,700 | 13 | 1,954 | 38 x 14 | 4 | 12,52 | 4131 | ● | ○ |
| 9/16 - 12 | 14,288 | 12 | 2,117 | 38 x 14 | 4 | 14,10 | 4132 | ● | ○ |
| 5/8 - 11 | 15,875 | 11 | 2,309 | 45 x 18 | 5 | 15,68 | 4133 | ● | ○ |
| 3/4 - 10 | 19,050 | 10 | 2,504 | 45 x 18 | 5 | 18,84 | 4135 | ● | ○ |
| 7/8 - 9 | 22,225 | 9 | 2,822 | 55 x 22 | 5 | 22,00 | 4137 | ● | ○ |
| 1 - 8 | 25,400 | 8 | 3,175 | 55 x 22 | 5 | 25,16 | 4139 | ● | ○ |
| 1.1/8 - 7 | 28,575 | 7 | 3,629 | 65 x 25 | 5 | 28,31 | 4141 | ○ | ○ |
| 1.1/4 - 7 | 31,750 | 7 | 3,629 | 65 x 25 | 6 | 31,49 | 4143 | ○ | ○ |
| 1.3/8 - 6 | 34,925 | 6 | 4,233 | 65 x 25 | 7 | 34,63 | 4145 | ○ | ○ |
| 1.1/2 - 6 | 38,100 | 6 | 4,233 | 75 x 30 | 6 | 37,80 | 4147 | ○ | ○ |
| 1.3/4 - 5 | 44,450 | 5 | 5,080 | 90 x 36 | 6 | 44,12 | 4151 | ○ | ○ |
| 2 - 4.1/2 | 50,800 | 4.1/2 | 5,645 | 90 x 36 | 7 | 50,45 | 4155 | ○ | ○ |

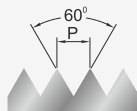
Przykład zamawiania / Example of order / Beispiel einer Bestellung:

N1-121001-4127
DIN-EN 22 568 1/4-20 UNC 2A HSS 800

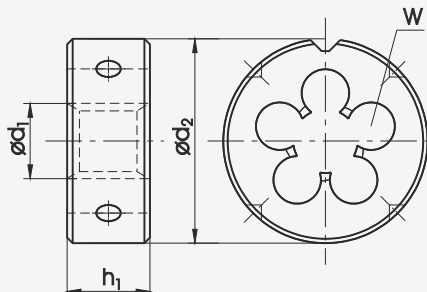
● Dostępne z magazynu / On stock / Ab Lager

○ Na zapytanie / On request / Auf Anfrage

Gwint amerykański zunifikowany drobnozwojny UNF, ANSI B-1.1

 American unified fine thread UNF, ANSI B-1.1
 Amerikanisches Unified - Feingewinde UNF, ANSI B-1.1

DIN-EN 22 568

HSS



3

| | | | | | |
|--|-------|-------|--|--|--|
| Nazwa / Name / Bezeichnung | 800 | 800 | | | |
| Materiał obrabiany / Material / Werkstoff | | | | | |
| Rodzaj materiału / Quality of material / Qualität | HSS | HSS | | | |
| Wykonanie / Execution / Ausführung | | LH | | | |
| Nakrój / Chamfer / Anschnitt | 1,75P | 1,75P | | | |
| Tolerancja / Tolerance / Toleranz | 2A | 2A | | | |

| UNF | $\varnothing d_1$ | 1"/P | P | $\varnothing d_2 \times h_1$ | W | | INDEX | N1-121001 | N1-111001 |
|------------|-------------------|------|-------|------------------------------|---|-------|-------|-----------|-----------|
| No 5 - 44 | 3,175 | 44 | 0,577 | 20 x 5 | 3 | 3,10 | 4205 | ● | ○ |
| No 6 - 40 | 3,505 | 40 | 0,635 | 20 x 5 | 3 | 3,42 | 4206 | ● | ○ |
| No 8 - 36 | 4,166 | 36 | 0,705 | 20 x 7 | 3 | 4,08 | 4208 | ● | ○ |
| No 10 - 32 | 4,826 | 32 | 0,794 | 20 x 7 | 3 | 4,73 | 4210 | ● | ○ |
| No 12 - 28 | 5,486 | 28 | 0,907 | 20 x 7 | 4 | 5,38 | 4212 | ● | ○ |
| 1/4 - 28 | 6,350 | 28 | 0,907 | 20 x 7 | 4 | 6,24 | 4227 | ● | ○ |
| 5/16 - 24 | 7,938 | 24 | 1,058 | 25 x 9 | 5 | 7,82 | 4228 | ● | ○ |
| 3/8 - 24 | 9,525 | 24 | 1,058 | 30 x 11 | 4 | 9,41 | 4229 | ● | ○ |
| 7/16 - 20 | 11,112 | 20 | 1,270 | 30 x 11 | 5 | 10,98 | 4230 | ● | ○ |
| 1/2 - 20 | 12,700 | 20 | 1,270 | 38 x 10 | 5 | 12,56 | 4231 | ● | ○ |
| 9/16 - 18 | 14,288 | 18 | 1,411 | 38 x 10 | 5 | 14,14 | 4232 | ● | ○ |
| 5/8 - 18 | 15,875 | 18 | 1,411 | 45 x 14 | 5 | 15,73 | 4233 | ● | ○ |
| 3/4 - 16 | 19,050 | 16 | 1,588 | 45 x 14 | 6 | 18,89 | 4235 | ● | ○ |
| 7/8 - 14 | 22,225 | 14 | 1,814 | 55 x 16 | 5 | 22,05 | 4237 | ● | ○ |
| 1 - 12 | 25,400 | 12 | 2,117 | 55 x 16 | 6 | 25,21 | 4239 | ● | ○ |
| 1.1/8 - 12 | 28,575 | 12 | 2,117 | 65 x 18 | 6 | 28,38 | 4241 | ○ | ○ |
| 1.1/4 - 12 | 31,750 | 12 | 2,117 | 65 x 18 | 6 | 31,55 | 4243 | ○ | ○ |
| 1.3/8 - 12 | 34,925 | 12 | 2,117 | 65 x 18 | 7 | 34,73 | 4245 | ○ | ○ |
| 1.1/2 - 12 | 38,100 | 12 | 2,117 | 75 x 20 | 8 | 37,90 | 4247 | ○ | ○ |

Przykład zamawiania / Example of order / Beispiel einer Bestellung:

 N1-121001-4239
 DIN-EN 22 568 1-12 UNF 2A HSS 800

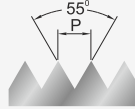
● Dostępne z magazynu / On stock / Ab Lager

○ Na zapytanie / On request / Auf Anfrage

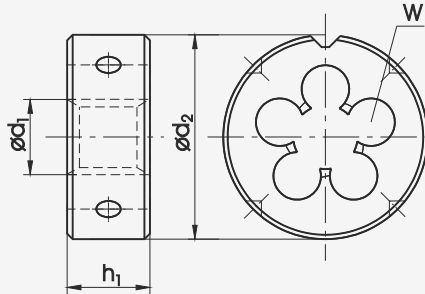
Gwint rurowy walcowy G, DIN-ISO 228

Whitworth pipe thread G, DIN-ISO 228

Whitworth Rohrgewinde G, DIN-ISO 228



HSS HSSE



DIN-EN 24 231



Nazwa / Name / Bezeichnung

800

800

INOX

Ms

Materiał obrabiany / Material / Werkstoff

Rodzaj materiału / Quality of material / Qualität

HSS

HSS

HSSE

HSS

Wykonanie / Execution / Ausführung

LH

Nakrój / Chamfer / Anschnitt

1,75P

1,75P

2,25P

1,25P

Tolerancja / Tolerance / Toleranz

A

A

A

A

| G | $\varnothing d_1$ | 1"/P | P | $\varnothing d_2 \times h_1$ | W | | INDEX | N1-121001 | N1-111001 | N2-188001 | N1-164001 |
|----------|-------------------|------|-------|------------------------------|---|-------|-------|-----------|-----------|-----------|-----------|
| G-1/8" | 9,73 | 28 | 0,907 | 30 x 11 | 4 | 9,62 | 3123 | ● | ○ | ● | ● |
| G-1/4" | 13,16 | 19 | 1,337 | 38 x 10 | 4 | 13,03 | 3127 | ● | ● | ● | ● |
| G-3/8" | 16,66 | 19 | 1,337 | 45 x 14 | 5 | 16,54 | 3129 | ● | ● | ● | ● |
| G-1/2" | 20,96 | 14 | 1,814 | 45 x 14 | 6 | 20,81 | 3131 | ● | ● | ● | ● |
| G-5/8" | 22,91 | 14 | 1,814 | 55 x 16 | 5 | 22,77 | 3133 | ● | ○ | ○ | ○ |
| G-3/4" | 26,44 | 14 | 1,814 | 55 x 16 | 6 | 26,30 | 3135 | ● | ● | ● | ● |
| G-7/8" | 30,20 | 14 | 1,814 | 65 x 18 | 6 | 30,06 | 3137 | ● | ○ | ○ | ○ |
| G-1" | 33,25 | 11 | 2,309 | 65 x 18 | 7 | 33,07 | 3139 | ● | ● | ● | ● |
| G-1.1/8" | 37,90 | 11 | 2,309 | 75 x 20 | 7 | 37,72 | 3141 | ○ | ○ | ○ | ○ |
| G-1.1/4" | 41,91 | 11 | 2,309 | 75 x 20 | 8 | 41,73 | 3143 | ● | ○ | ○ | ○ |
| G-1.3/8" | 44,32 | 11 | 2,309 | 90 x 22 | 7 | 44,14 | 3145 | ○ | ○ | ○ | ○ |
| G-1.1/2" | 47,80 | 11 | 2,309 | 90 x 22 | 7 | 47,62 | 3147 | ● | ○ | ○ | ○ |
| G-1.3/4" | 53,75 | 11 | 2,309 | 105 x 22 | 8 | 53,57 | 3151 | ○ | ○ | ○ | ○ |
| G-2" | 59,61 | 11 | 2,309 | 105 x 22 | 8 | 59,43 | 3155 | ○ | ○ | ○ | ○ |
| G-2.1/4" | 65,71 | 11 | 2,309 | 120 x 22 | 8 | 65,49 | 3157 | ○ | ○ | ○ | ○ |

Przykład zamawiania / Example of order / Beispiel einer Bestellung:

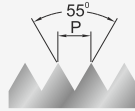
N1-164001-3129
DIN-EN 24 231 G-3/8" A HSS Ms

● Dostępne z magazynu / On stock / Ab Lager

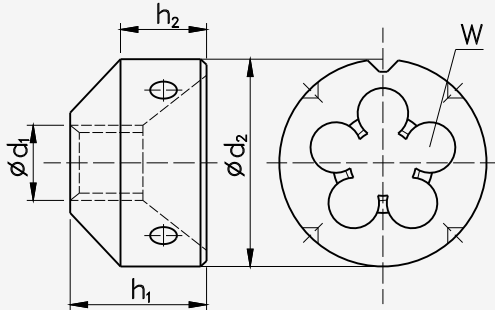
○ Na zapytanie / On request / Auf Anfrage

Gwint rurowy walcowy G, DIN-ISO 228

Whitworth pipe thread G, DIN-ISO 228
Whitworth Rohrgewinde G, DIN-ISO 228



HSS

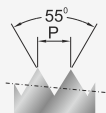


NHMg

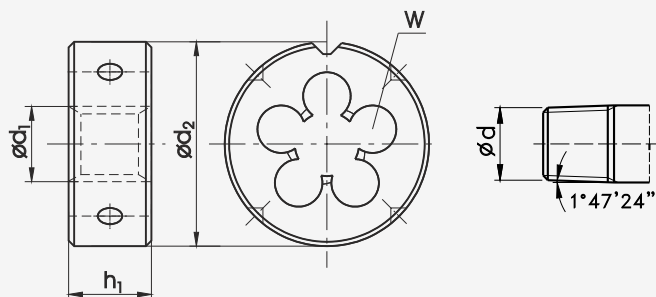


| Nazwa / Name / Bezeichnung | | 800 | Ms | | | | | | | | | | | |
|--|------------|-------|-------|------------|-------|-------|---|-------|-------|-----------|-----------|--|--|--|
| Materiał obrabiany / Material / Werkstoff | | | | | | | | | | | | | | |
| Rodzaj materiału / Quality of material / Qualität | | HSS | HSS | | | | | | | | | | | |
| Wykonanie / Execution / Ausführung | | | | | | | | | | | | | | |
| Nakrój / Chamfer / Anschnitt | | 1,75P | 1,25P | | | | | | | | | | | |
| Tolerancja / Tolerance / Toleranz | | A | A | | | | | | | | | | | |
| G | ϕd_1 | 1"/P | P | ϕd_2 | h_1 | h_2 | W | | INDEX | K1-821001 | K1-864001 | | | |
| G-1/8" | 9,73 | 28 | 0,907 | 30 | 18 | 11 | 5 | 9,62 | 3123 | o | ● | | | |
| G-1/4" | 13,16 | 19 | 1,337 | 38 | 18 | 10 | 5 | 13,03 | 3127 | o | ● | | | |
| G-3/8" | 16,66 | 19 | 1,337 | 45 | 18 | 10 | 5 | 16,54 | 3129 | o | ● | | | |
| G-1/2" | 20,96 | 14 | 1,814 | 45 | 23 | 14 | 6 | 20,81 | 3131 | o | ● | | | |
| G-5/8" | 22,91 | 14 | 1,814 | 55 | 27 | 16 | 5 | 22,77 | 3133 | o | o | | | |
| G-3/4" | 26,44 | 14 | 1,814 | 55 | 27 | 16 | 6 | 26,30 | 3135 | o | ● | | | |

Gwint rurowy stożkowy R, ISO-7/1

 Whitworth pipe external thread R, ISO-7/1
 Kegelliges Whitworth-Rohr-Außengewinde R, ISO-7/1


HSS


DIN-EN 24 230


Nazwa / Name / Bezeichnung

800

Materiał obrabiany / Material / Werkstoff

Rodzaj materiału / Quality of material / Qualität

HSS

Wykonanie / Execution / Ausführung

Nakrój / Chamfer / Anschnitt

2P

Tolerancja / Tolerance / Toleranz

| R | $\varnothing d_1$ | 1"/P | P | $\varnothing d_2 \times h_1$ | W | $\varnothing d$ | INDEX | N1-121001 | | | | |
|--------|-------------------|------|-------|------------------------------|---|-----------------|-------|-----------|--|--|--|--|
| R-1/8" | 9,73 | 28 | 0,907 | 30 x 11 | 5 | 9,48 | 3423 | ● | | | | |
| R-1/4" | 13,16 | 19 | 1,337 | 38 x 14 | 5 | 12,78 | 3427 | ● | | | | |
| R-3/8" | 16,16 | 19 | 1,337 | 45 x 18 | 5 | 16,26 | 3429 | ● | | | | |
| R-1/2" | 20,96 | 14 | 1,814 | 55 x 22 | 5 | 20,44 | 3431 | ● | | | | |
| R-3/4" | 26,44 | 14 | 1,814 | 55 x 22 | 6 | 25,85 | 3435 | ● | | | | |
| R-1" | 32,25 | 11 | 2,309 | 65 x 25 | 7 | 32,60 | 3439 | ● | | | | |

Przykład zamawiania / Example of order / Beispiel einer Bestellung:

 N1-121001-3427
 DIN-EN 24 230 R-1/4" HSS 800

● Dostępne z magazynu / On stock / Ab Lager

○ Na zapytanie / On request / Auf Anfrage

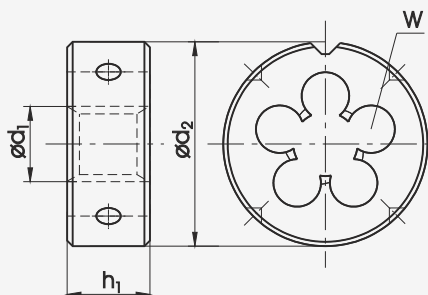
Gwint calowy zwykły Whitwortha BSW, BS-84:1956

Whitworth thread BSW, BS-84:1956

Whitworth-Gewinde BSW, BS-84:1956


DIN-EN 22 568

HSS


Nazwa / Name / Bezeichnung

800

800

Materiał obrabiany / Material / Werkstoff
Rodzaj materiału / Quality of material / Qualität

HSS

HSS

Wykonanie / Execution / Ausführung

LH

Nakrój / Chamfer / Anschnitt

1,75P

1,75P

Tolerancja / Tolerance / Toleranz

medium class

medium class

| BSW | $\varnothing d_1$ | 1"/P | P | $\varnothing d_2 \times h_1$ | W | | INDEX | N1-121001 | N1-111001 |
|-----------|-------------------|------|-------|------------------------------|---|-------|-------|-----------|-----------|
| 1/8 - 40 | 3,18 | 40 | 0,635 | 20 x 5 | 3 | 3,09 | 7123 | ● | ○ |
| 3/16 - 24 | 4,76 | 24 | 1,058 | 20 x 7 | 4 | 4,66 | 7125 | ● | ○ |
| 1/4 - 20 | 6,35 | 20 | 1,270 | 20 x 7 | 4 | 6,24 | 7127 | ● | ○ |
| 5/16 - 18 | 7,94 | 18 | 1,411 | 25 x 9 | 4 | 7,82 | 7128 | ● | ○ |
| 3/8 - 16 | 9,53 | 16 | 1,588 | 30 x 11 | 4 | 9,40 | 7129 | ● | ○ |
| 7/16 - 14 | 11,11 | 14 | 1,814 | 30 x 11 | 4 | 10,98 | 7130 | ● | ○ |
| 1/2 - 12 | 12,70 | 12 | 2,117 | 38 x 14 | 4 | 12,56 | 7131 | ● | ○ |
| 9/16 - 12 | 14,29 | 12 | 2,117 | 38 x 14 | 4 | 14,14 | 7132 | ● | ○ |
| 5/8 - 11 | 15,88 | 11 | 2,309 | 45 x 18 | 5 | 15,72 | 7133 | ● | ○ |
| 3/4 - 10 | 19,05 | 10 | 2,504 | 45 x 18 | 5 | 18,89 | 7135 | ● | ○ |
| 7/8 - 9 | 22,23 | 9 | 2,822 | 55 x 22 | 5 | 22,10 | 7137 | ● | ○ |
| 1 - 8 | 25,40 | 8 | 3,175 | 55 x 22 | 5 | 25,27 | 7139 | ● | ○ |

3

Przykład zamawiania / Example of order / Beispiel einer Bestellung:

 N1-121001-7123
 DIN-EN 22 568 1/8-40 BSW HSS 800

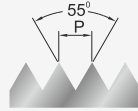
● Dostępne z magazynu / On stock / Ab Lager

○ Na zapytanie / On request / Auf Anfrage

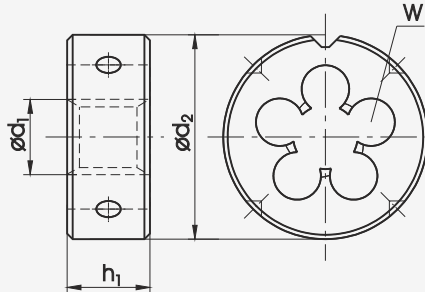
**Gwint calowy drobnozwojny Whitwortha
BSF, BS-84:1956**

British Whitworth fine thread BSF, BS-84:1956

Britisches Whitworth - Feingewinde BSF, BS-84:1956



HSS



DIN-EN 22 568



Nazwa / Name / Bezeichnung

800

800

Materiał obrabiany / Material / Werkstoff

Rodzaj materiału / Quality of material / Qualität

HSS

HSS

Wykonanie / Execution / Ausführung

LH

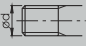
Nakrój / Chamfer / Anschnitt

1,75P

1,75P

Tolerancja / Tolerance / Toleranz

medium
classmedium
class

| BSF | $\varnothing d_1$ | 1"/P | P | $\varnothing d_2 \times h_1$ | W |  | INDEX | N1-121001 | N1-111001 |
|-----------|-------------------|------|-------|------------------------------|---|---|-------|-----------|-----------|
| 3/16 - 32 | 4,76 | 32 | 0,794 | 20 x 7 | 4 | 4,76 | 7225 | ● | ○ |
| 1/4 - 26 | 6,35 | 26 | 0,977 | 20 x 7 | 4 | 6,25 | 7227 | ● | ○ |
| 5/16 - 22 | 7,94 | 22 | 1,155 | 25 x 9 | 4 | 7,83 | 7228 | ● | ○ |
| 3/8 - 20 | 9,53 | 20 | 1,270 | 30 x 11 | 4 | 9,41 | 7229 | ● | ○ |
| 7/16 - 18 | 11,11 | 18 | 1,411 | 30 x 11 | 5 | 10,99 | 7230 | ● | ○ |
| 1/2 - 16 | 12,70 | 16 | 1,588 | 38 x 10 | 5 | 12,57 | 7231 | ● | ○ |
| 9/16 - 16 | 14,29 | 16 | 1,588 | 38 x 10 | 4 | 14,16 | 7232 | ● | ○ |
| 5/8 - 14 | 15,88 | 14 | 1,814 | 45 x 14 | 4 | 15,73 | 7233 | ● | ○ |
| 3/4 - 12 | 19,05 | 12 | 2,117 | 45 x 14 | 5 | 18,89 | 7235 | ● | ○ |
| 7/8 - 11 | 22,23 | 11 | 2,309 | 55 x 22 | 5 | 22,11 | 7237 | ● | ○ |
| 1 - 10 | 25,40 | 10 | 2,504 | 55 x 22 | 5 | 25,28 | 7239 | ● | ○ |

Przykład zamawiania / Example of order / Beispiel einer Bestellung:

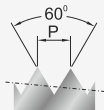
N1-121001-7239
DIN-EN 22 568 1-10 BSF HSS 800

● Dostępne z magazynu / On stock / Ab Lager

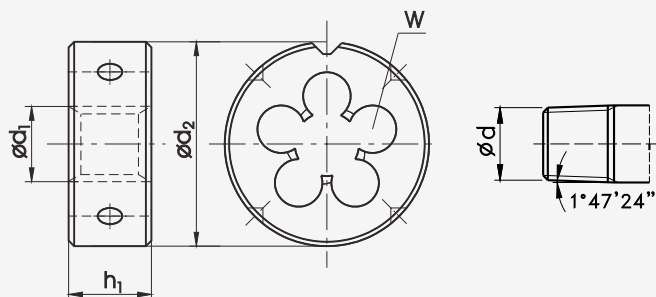
○ Na zapytanie / On request / Auf Anfrage

Gwint amerykański rurowy stożkowy
NPT 1:16, ANSI B-1.20.1

American tapered pipe thread
NPT 1:16, ANSI B-1.20.1
Amerikanisches kegeliges Rohrgewinde
NPT 1:16, ANSI B-1.20.1



HSS



DIN-EN 24 230



Nazwa / Name / Bezeichnung

800

Materiał obrabiany / Material / Werkstoff

Rodzaj materiału / Quality of material / Qualität

HSS

Wykonanie / Execution / Ausführung

Nakrój / Chamfer / Anschnitt

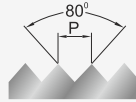
2P

Tolerancja / Tolerance / Toleranz

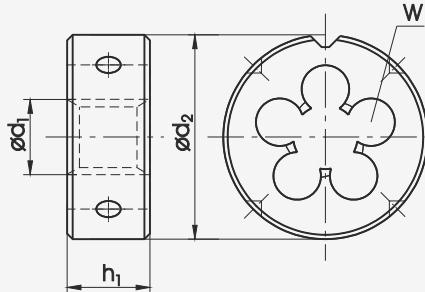
| NPT | $\varnothing d_1$ | 1"/P | P | $\varnothing d_2 \times h_1$ | W | $\varnothing d$ | INDEX | N1-121001 | | | | |
|------|-------------------|--------|-------|------------------------------|---|-----------------|-------|-----------|--|--|--|--|
| 1/8" | 9,728 | 27 | 0,941 | 30 x 11 | 5 | 9,99 | 4623 | ● | | | | |
| 1/4" | 13,157 | 18 | 1,411 | 38 x 14 | 5 | 13,26 | 4627 | ● | | | | |
| 3/8" | 16,662 | 18 | 1,411 | 45 x 18 | 5 | 16,67 | 4629 | ● | | | | |
| 1/2" | 20,955 | 14 | 1,814 | 45 x 18 | 6 | 20,71 | 4631 | ● | | | | |
| 3/4" | 26,441 | 14 | 1,814 | 55 x 22 | 6 | 26,03 | 4635 | ● | | | | |
| 1" | 33,249 | 11.1/2 | 2,209 | 65 x 25 | 7 | 32,59 | 4639 | ● | | | | |

3

**Gwint do rurek instalacyjnych
 stalowych Pg, DIN-40430**

 Steel conduit thread Pg, DIN-40430
 Stahlpanzerrohr - Gewinde Pg, DIN-40430


HSS


DIN-EN 22 568


Nazwa / Name / Bezeichnung

800

Materiał obrabiany / Material / Werkstoff

Rodzaj materiału / Quality of material / Qualität

HSS

Wykonanie / Execution / Ausführung

Nakrój / Chamfer / Anschnitt

1,75P

Tolerancja / Tolerance / Toleranz

| Pg | $\varnothing d_1$ | 1"/P | P | $\varnothing d_2 \times h_1$ | W | $\varnothing d_1$ | INDEX | N1-121001 | | | | |
|---------|-------------------|------|-------|------------------------------|---|-------------------|-------|-----------|--|--|--|--|
| Pg 7 | 12,5 | 20 | 1,270 | 38 x 10 | 4 | 12,40 | 8807 | ● | | | | |
| Pg 9 | 15,2 | 18 | 1,411 | 45 x 14 | 5 | 15,10 | 8809 | ● | | | | |
| Pg 11 | 18,6 | 18 | 1,411 | 45 x 14 | 5 | 18,50 | 8811 | ● | | | | |
| Pg 13,5 | 20,4 | 18 | 1,411 | 45 x 14 | 5 | 20,30 | 8813 | ● | | | | |
| Pg 16 | 22,5 | 18 | 1,411 | 55 x 16 | 5 | 22,40 | 8816 | ● | | | | |
| Pg 21 | 28,3 | 16 | 1,588 | 65 x 18 | 6 | 28,15 | 8821 | ● | | | | |
| Pg 29 | 37,0 | 16 | 1,588 | 65 x 18 | 7 | 36,85 | 8829 | ● | | | | |
| Pg 36 | 47,0 | 16 | 1,588 | 90 x 22 | 7 | 46,85 | 8836 | ○ | | | | |
| Pg 42 | 54,0 | 16 | 1,588 | 105 x 22 | 9 | 53,85 | 8842 | ○ | | | | |
| Pg 48 | 59,3 | 16 | 1,588 | 105 x 22 | 8 | 59,15 | 8848 | ○ | | | | |

Gwint Pg jest zastępowany gwintem metrycznym drobnoszwojnym MF wg normy DIN EN 60423 dostępnym na zapytanie

Pg thread is replaced by metric fine MF according to DIN EN 60423 available on request
 Pg-Gewinde wird durch metrisches Feingewinde ersetzt nach Norm DIN EN 60423 auf Anfrage

